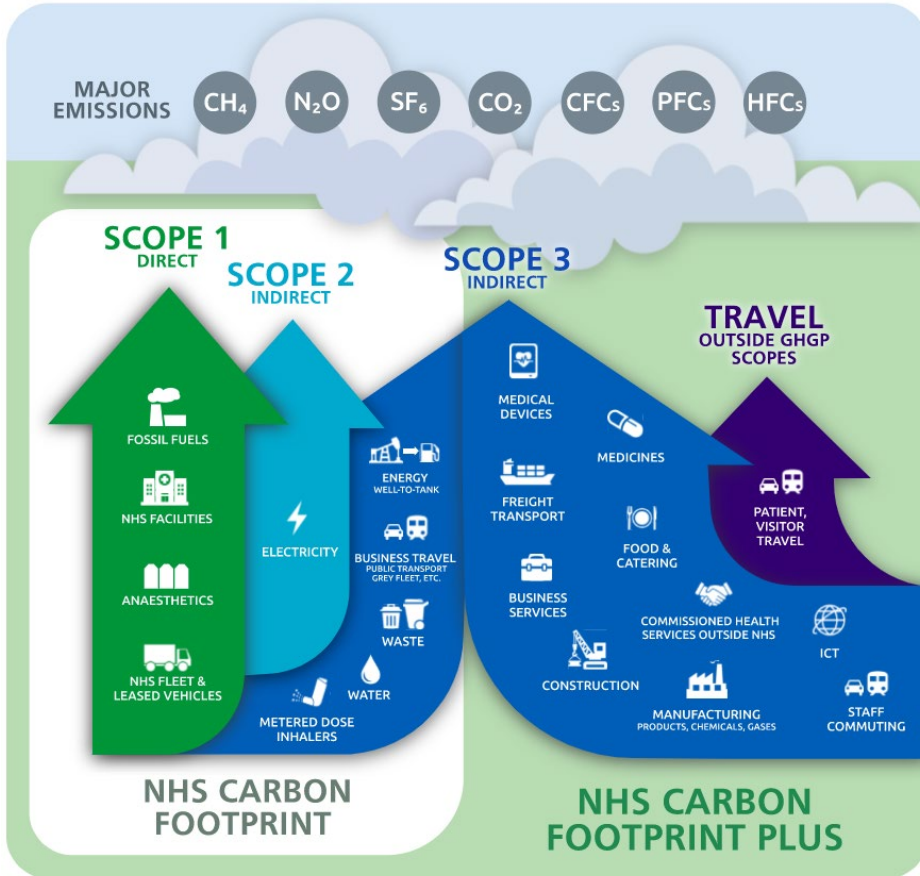


Battery recycling

Available through the Batteries, Lighting Tools and Associated Facilities Management Consumables framework



- NHS Supply Chain are committed to supporting the long-term ambition of the NHS becoming the [world's first carbon net zero national health system by 2045](#).
- The [Batteries, Lighting, Tools, and Facilities Management Consumables framework](#) covers a wide range of products, from standard alkaline AA and AAA batteries, to high power alternatives, and rechargeable batteries.
- Alongside products, the framework also offers NHS organisations the opportunity to access recycling services with a registered waste carrier company. Through this process, trusts can source a variety of onsite collection containers and arrange the collections and transportation of them to recycling centres.

What recycling options are available?

There are three ways to recycle your batteries through the NHS Supply Chain framework:

Collection points

Batteries can be deposited at different collection points throughout the UK. These can be found on the Recycle More website [Where to recycle near me? - Online Locator \(recycle-more.co.uk\)](http://www.recycle-more.co.uk)

Battery Box 15kg



Suitable for organisations with multiple sites, they are designed to sit in visible areas such as receptions

Pallet Box 1000kg



LB1 - LARGE BATTERY BIN
 Height = 763mm
 Width = 1000mm
 Length = 1200mm
 Holds approx 1000kg/600ltr

Designed for warehouses or other suitably large areas.

Types of Batteries Accepted

Domestic batteries

Also known as portable batteries.

See slide 6 for further details of the batteries accepted in the 15kg recycling box

Industrial batteries

Lead acid batteries need to be treated separately.

These can still be collected as long as they are in a separate box.

Lead acid batteries

Lead acid batteries need to be treated separately. These can still be collected as long as they are stored in a separate box.

Lead based car batteries, VRLA batteries and motorcycle batteries are recycled separately. (Lead batteries should not be mixed with any other type of batteries).

How much can I recycle?

Boxes can be collected one or several at a time.

They must be closed prior to collection.

Types of Batteries Accepted

Domestic batteries (portable batteries)

The batteries listed in the following table are all accepted in the recycling 15kg box. Batteries with connecting wires need to be separated from other batteries and will be treated differently.

Battery Type	Description	Formats	Common Uses
Alkaline and carbon zinc batteries	Small dry-cell batteries, sealed, non-rechargeable, Carbon Zinc batteries are labelled general purpose or heavy duty	<ul style="list-style-type: none">• AA• AAA• D-cell• C-cell• 9-volt• Button cells	Camera, toys, watches, handheld electronics
Lithium (primary) batteries	Small dry-cell batteries, sealed, non-rechargeable	<ul style="list-style-type: none">• Button cells• AA• AAA• 9-volt• Small cylinder• Custom sizes	Watches, camera, hand held electronics, tyre pressure sensors, alarms, memory backup, remote car locks, pacemakers, high temperature applications.
Lithium-Ion (Li-ion) batteries	Backup, remote car sealed, rechargeable	<ul style="list-style-type: none">• Custom sizes in hard plastic case• Small cylinder• Button cells	Mobile phones, laptops, power tools, video cameras, hand held electronics.

Ordering a Bin or Pallet and Collections

Ordering a bin or pallet

Request a cardboard box – If customers do not have an account, you can order boxes through the supplier website: Counter top battery recycling bin - KOM2800 | Allbatteries.co.uk. If customers have an account, they can request a box by contacting their Account Manager. Boxes are free of charge.

Request a pallet box – To request a pallet box, customers can email recycling@upenergy.com directly with their name, company name, contact details and address of where the pallet box needs to be sent to. The cost of the bin is £100 per year and collections of full pallets are free of charge.

Requesting a collection

Collection of a cardboard box – customers should follow the instructions on the back of their box and contact Valpak directly on 0345 0682572.

Collection of a pallet box – Once a bin is nearly full, customers can make request collection by emailing recycling@upenergy.com. Emails should include:

- How many pallets to be collected, the size and weight
- The chemistry type of batteries to be collected
- If a forklift truck is on site

Site contact's name, email address, phone number, any necessary access codes, parking restrictions etc
Company name, address and postcode of collection site.
A photo of the batteries and the container. We recommend doing this before pallet(s) are full as collection can take up to 7-10 working days after your request. A replacement container will be delivered at the same time as collection.

It may be useful for customers to have pallets in their stores / delivery areas if applicable as it facilitates collections, especially if customers do not have appropriate lifting devices.

Useful Information

Batteries should be placed carefully and not thrown into the boxes / pallets

Keep lead acid batteries separate from other types of batteries

Mixed waste portable batteries can contain up to 5% (by weight) of lithium

Batteries should be stored in a dry place and covered away from heat sources and liquids.

For further information and customer queries, please contact:
Jack Whittaker, Senior Category Manager
facilitiesandofficesolutionsupport@supplychain.nhs.uk